

## **BE A LEADER**

**2009**

“Be a leader” is a program addressed to the 11<sup>th</sup> and 12<sup>th</sup> form high school students and for students and it is designed to teach them to become leaders of the community they belong to. The students will identify the main characteristics of a leader, they will study the local community and problems that it has. Based on their study and the example from the manuals students design their own community project – answering to a problem familiar to them. After an inventory of their leadership abilities through different instruments they have the possibility to prove them in the projects.

In the general context of the education in Romania, the theory is very dense but the practical side of the education still lacks. This is where our project adds value to the theoretical aspect of the education process. The students in the program will actually learn how to identify leadership values and benefits; they will learn what it means specifically, by working on case studies not only in theory and by participating as volunteers in different school and community projects. They will learn what the role of a leader is within a team, and what a leader’s abilities are. They will understand what community development means and how they can be involved in it. They will be able to assume the role of a leader of the community and how to act most efficiently as one.

After a period of communism when leadership was not appreciated most of the Romanian teachers still lack knowledge and initiative in some areas. By teaching to students about leadership they learn more about the concepts and more than that are in the position to really make a change.

The social entrepreneur should be understood as someone who targets an unfortunate but stable equilibrium that causes the neglect, marginalization, or suffering of a segment of humanity; who brings to bear on this situation his or her inspiration, direct action, creativity, courage, and fortitude; and who aims for and ultimately affects the establishment of a new stable equilibrium that secures permanent benefit for the targeted group and society at large.

The program consists of two components:

1. The class conducted under teacher supervision.
2. The “Be a Leader!” project competition in social entrepreneurship.

The role of the first component is to supply leadership knowledge and offer an idea of the community’s needs. JARomania has decided to also create a competition by means of which students would be encouraged to apply their knowledge and the best ideas would be awarded and recognized for their ability to solve some of society’s problems. This way, more and more students start to really use their knowledge and abilities and put their ideas in practice.

### **Class objectives:**

- Getting to know what a leader means, with a leader's needed abilities and the role he plays within a team.
- Integrating the notion of economic development in the analysis of a study case.
- Creating project through which the students can assume leadership and act accordingly.

### **Program Makeup**

***Be a Leader (Să fii Lider)– the 2009 edition***, got underway along with the school year, since September 2008, and benefited from the involvement of 75 teachers from all over the country, most of which (60%) were involved in other JA programs through the past few years.

In the 2008-2009 school year, approx. 5000 students took part in the program run as an extended version of an optional course – in classes without form teacher guidance.

Most teachers used activities from the program in counseling classes they conducted as form teachers. We thus estimate that the number of beneficiaries of this program is at least 6000.

Many teachers who have been running the program for some years now, using activities from the program selectively, have resorted to Xeroxes for the worksheets, and thus have waived access to support material (teacher's guide and worksheets).

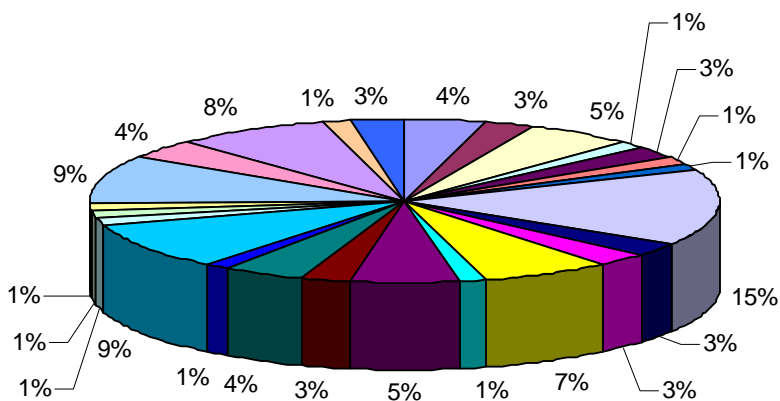
The new developments throughout this school year were as follows:

- Realizing the section of online training for the teachers who are engaged in the program. This is available for access on the site [www.safiilider.jaromania.org](http://www.safiilider.jaromania.org), on the account page allotted to each teacher in the program.
- Access to online consultancy by means of the website [www.voluntarcenter.ro](http://www.voluntarcenter.ro)

As the charts show, the program is active both in Bucharest and in other large cities, but also in relatively small communities, where problems and needs are of a quite specific nature and where youth participation as well as their taking responsibilities meet with the support of the community.

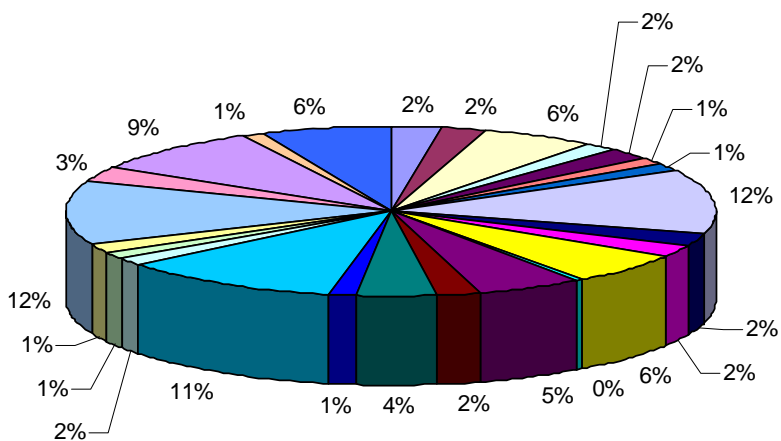
**The counties** where the program was most successful were: Bucharest, Cluj, Hunedoara, Mehedinti, Timis and Vaslui.

**Distribution of teachers by counties**



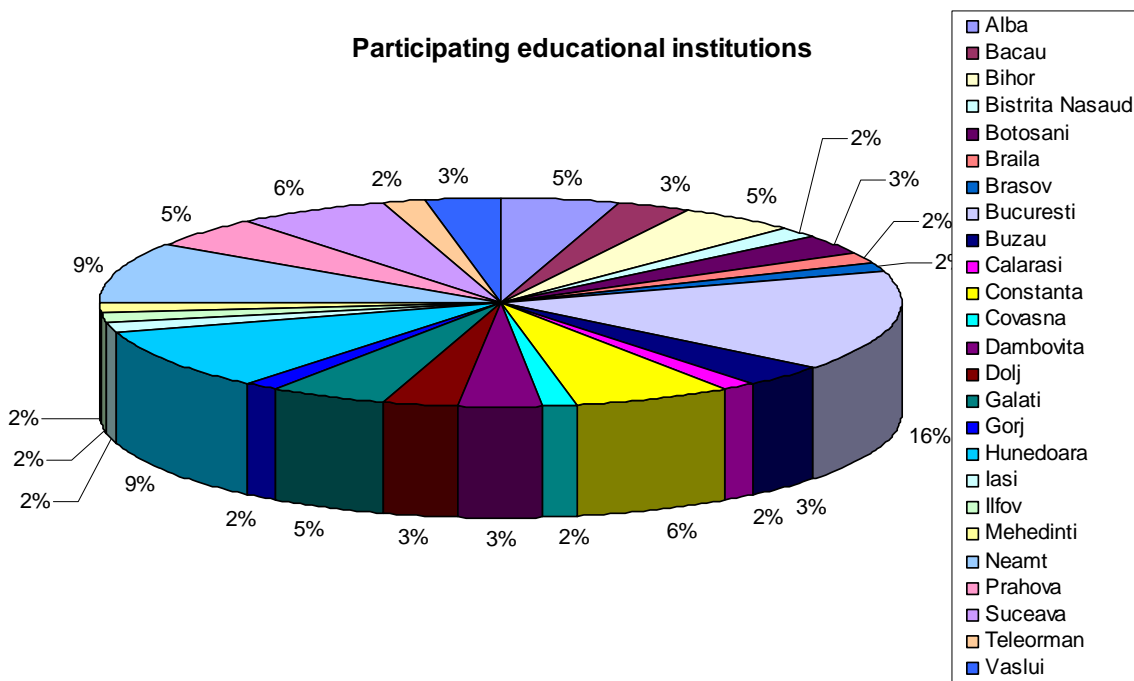
- Alba
- Bacau
- Bihor
- Bistrita Nasaud
- Botosani
- Braila
- Brasov
- Bucuresti
- Buzau
- Calarasi
- Constanta
- Covasna
- Dambovita
- Dolj
- Galati
- Gorj
- Hunedoara
- Iasi
- Ifov
- Mehedinti
- Neamt
- Prahova
- Suceava
- Teleorman
- Vaslui

**Distribution of participants by counties**

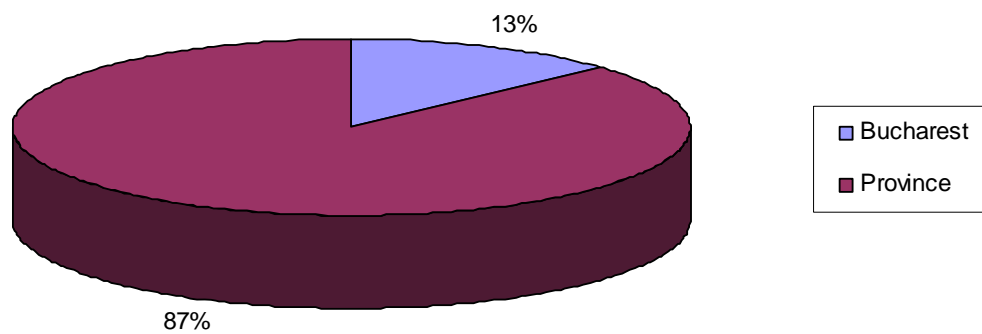


- Alba
- Bacau
- Bihor
- Bistrita Nasaud
- Botosani
- Braila
- Brasov
- Bucuresti
- Buzau
- Calarasi
- Constanta
- Covasna
- Dambovita
- Dolj
- Galati
- Gorj
- Hunedoara
- Iasi
- Ifov
- Mehedinti
- Neamt
- Prahova
- Suceava
- Teleorman
- Vaslui

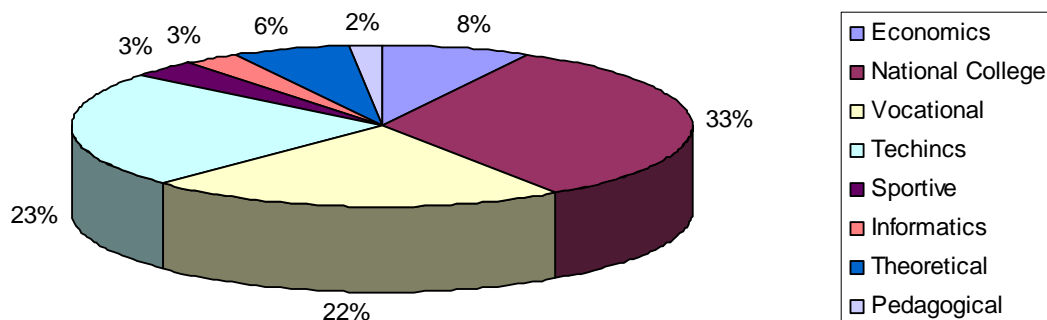
### Participating educational institutions



### Participants Bucharest / Province



## Types of educational institutions



Out of the final tally of educational institutions, 12 were from Bucharest and the other 64 were scattered throughout the country, and somewhat uniformly spread in all participating cities. As far as the types of educational institutions, 41% of them were focused on general knowledge and the rest were vocational establishments – all from across the country, which demonstrates a rising interest in the program, among theoretical high schools and arts-and-crafts schools alike

### Competition:

The 2008-2009 school year has brought some new developments:

- The access to information and materials needed in order that students prepare for the “Be a Leader” social-entrepreneurship project competition was made possible through a website: [www.safilider.jaromania.org](http://www.safilider.jaromania.org)
- The website offered youths who did or did not have the program introduced into their classroom the possibility to join and access the materials.
- The enrolment took place online, on the website [www.jaromania.org](http://www.jaromania.org)
- The participation package "Implementation Brief" was introduced at the closing of the competition, giving the project an entrepreneurial dimension
- 20 projects were selected for the PUPILS section and 5 for the STUDENTS section, with a view to their undergoing the evaluation by the jury made up of the representatives from Junior Achievement, ISMB, the Association for Civic Education and the sponsor Company.

The finalists were announced on the site and there followed an online consulting period which JA set up in order to help students adjust the projects for the final evaluation stage.

**The competition schedule:**

1. Enrolment took place online (by signing up and creating a user's account) on the site [www.jaromania.org](http://www.jaromania.org) and lasted until April, 1, 2009

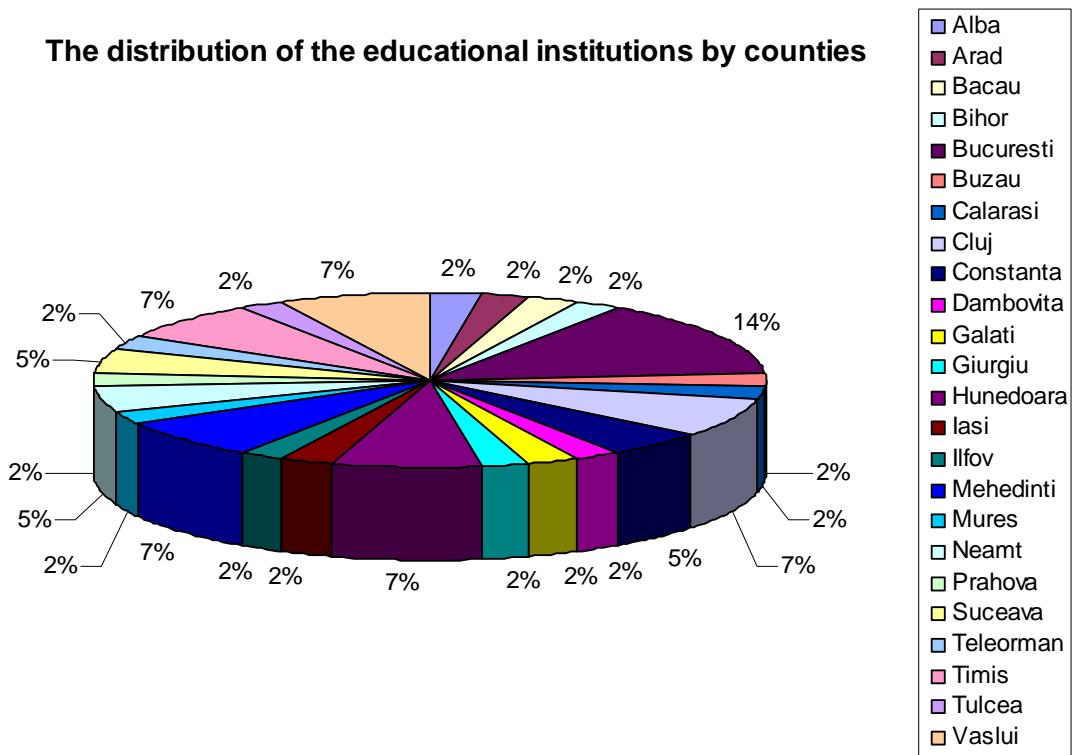
Were uploaded on the site:

- Personal data
  - Curriculum Vitae
2. The materials created by the participants were uploaded on the site (in the solutions section) until May 1, 2009:
    - The project (written paper)
    - How to make a project presentation in 5 steps (pdf)
  3. The materials created by the participants were uploaded on the site (in the solutions section) until May 15, 2009:
    - Status report
    - Teacher's evaluation
  4. The 20 finalists were announced on May 26, 2009
  5. Prize were announced on June 3, 2009
  6. Award ceremony: November, 2009

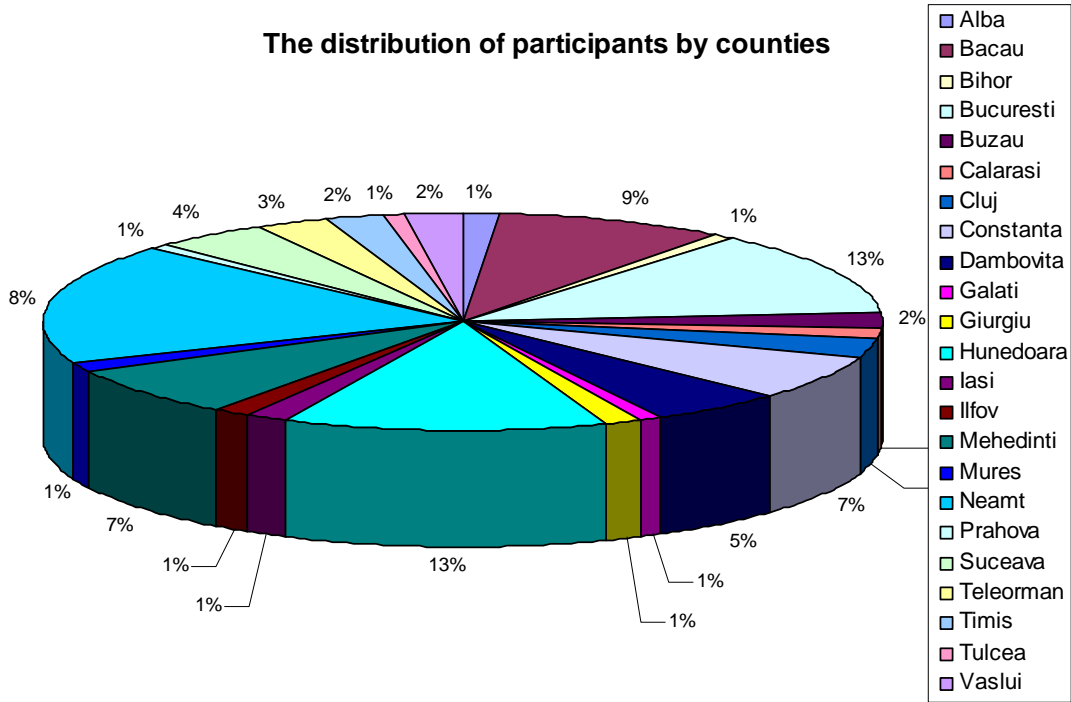
Jury deliberation: Of the 150 students who entered the project competition, 20 from the PUPILS' section and 5 from the STUDENTS' section were selected to go into final. The finalists were announced on the website and there followed an online consulting period which JA set up in order to help students improve their project for the final evaluation.

As the charts show, "Be a leader" successfully gathered school representatives from most of the country's regions: Bucharest, Transilvania, Banat, Oltenia, Moldova, Dobrogea.

The distribution of the educational institutions by counties

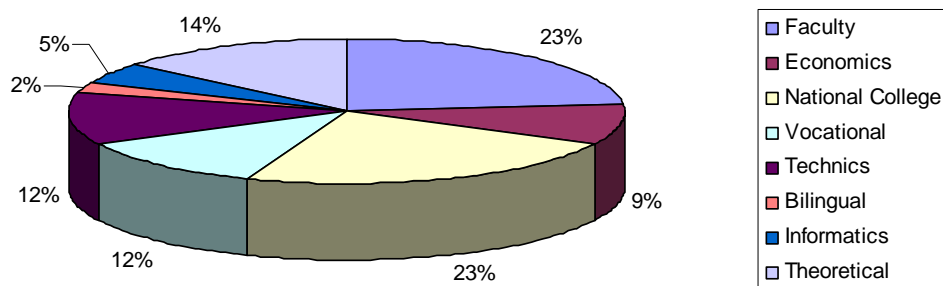


**The distribution of participants by counties**



The

**Types of educational institutions**



students came from different types of school: National College, Economic College, High-school with special Informatics programs, High-school, Tehnical College.

